

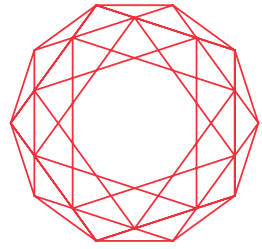
Ruby floorplans



3 Bedrooms

2 Bathrooms

2 Car spaces



RUBY

GUNG AHLIN

Apartment type
N-3A.1

3 Bedrooms
2 Bathrooms
2 Car spaces

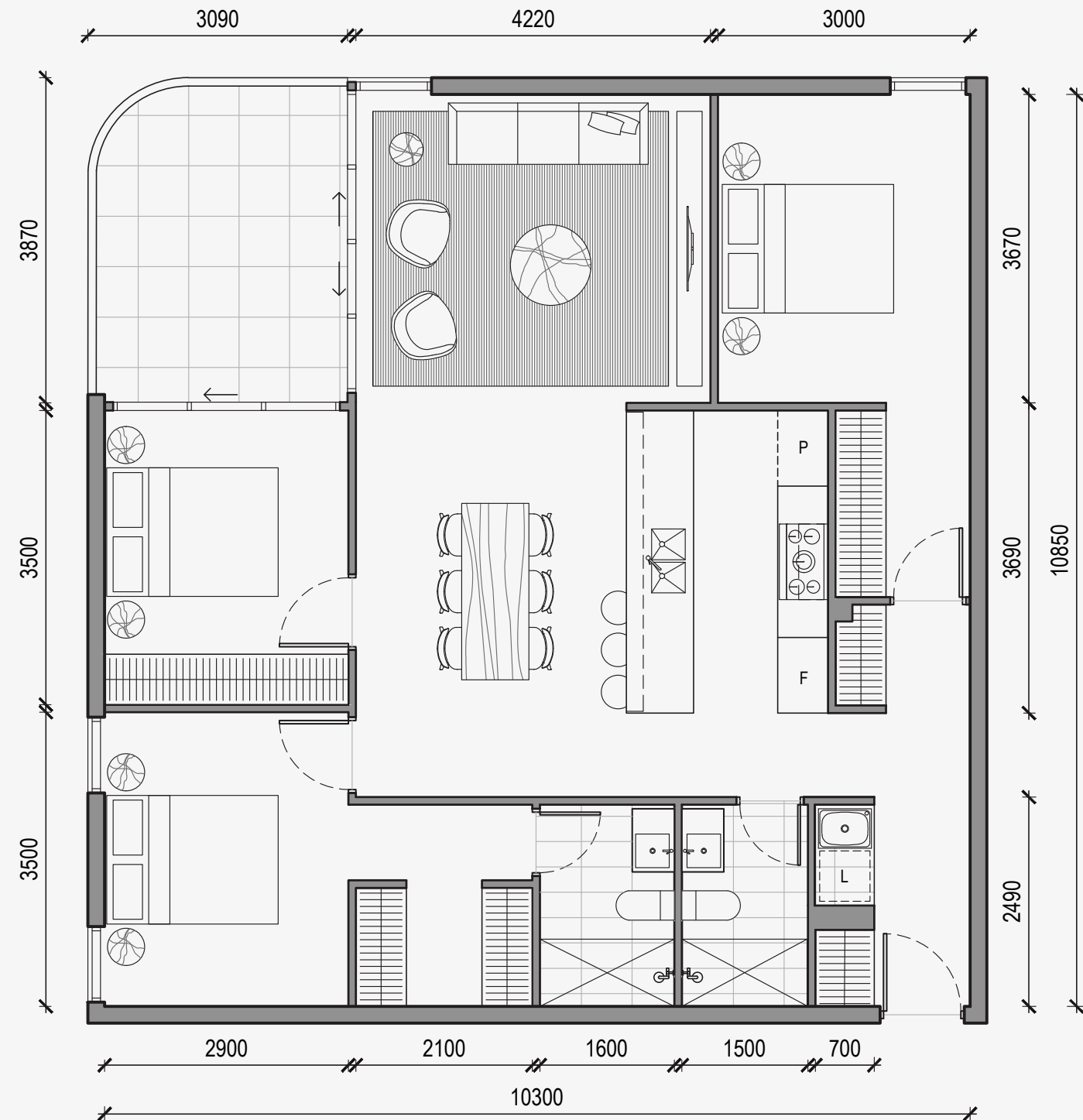
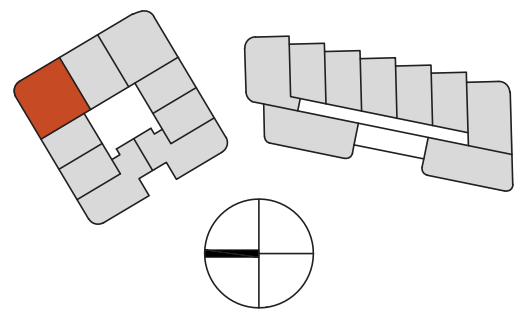
Living area: 106m²

Balcony: 11m²

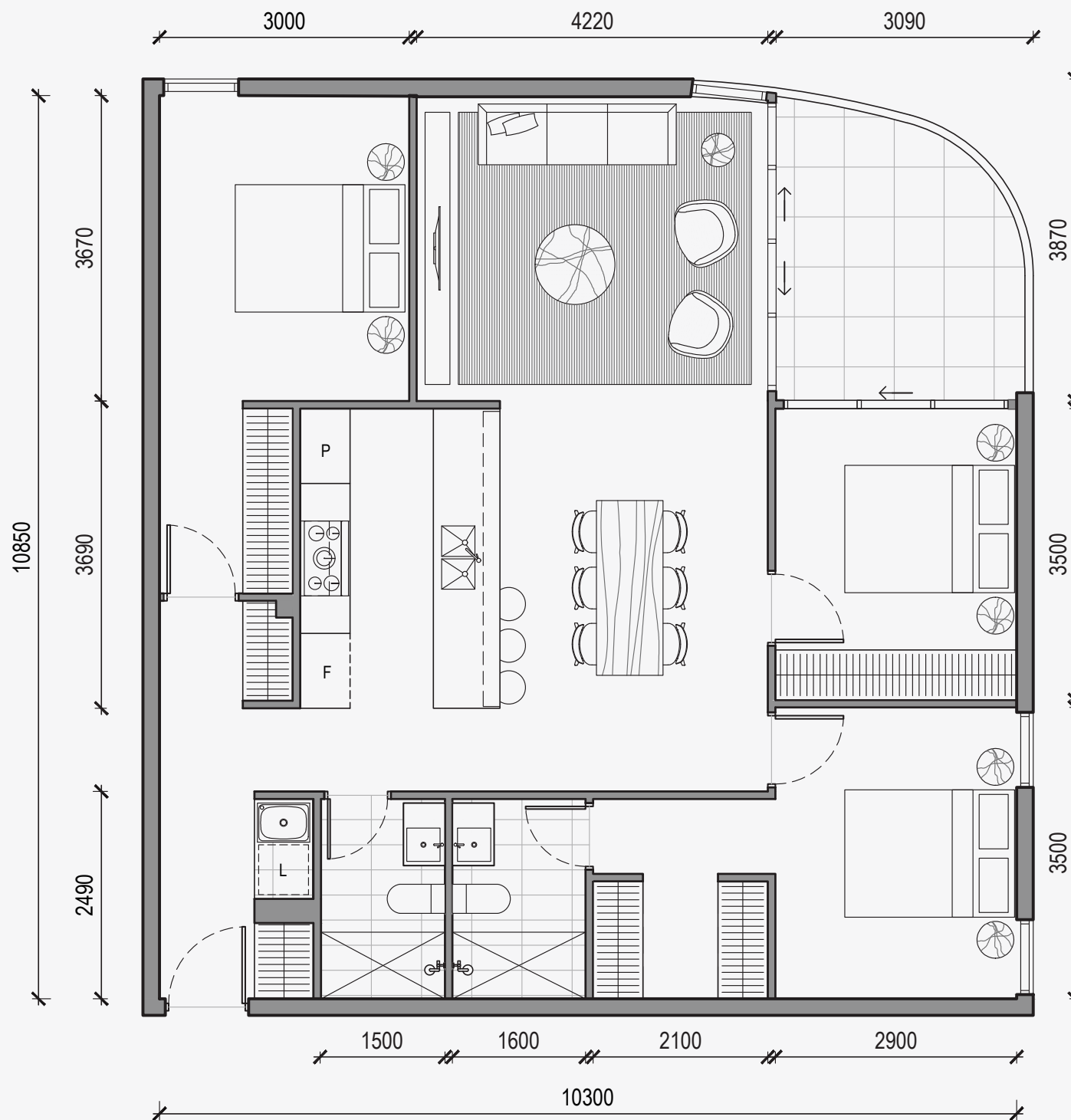
Total Area: 117m²

Unit Numbers

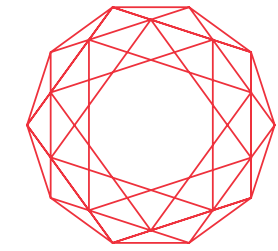
- Level 4 - 1
- Level 5 - 9
- Level 6 - 18
- Level 7 - 27
- Level 8 - 36
- Level 9 - 45
- Level 10 - 54
- Level 11 - 63
- Level 12 - 72
- Level 13 - 81
- Level 14 - 90
- Level 15 - 99



This floor plan, including treatment to balcony or courtyard, is indicative only and subject to change without notice. Any dimensions and areas shown may be varied subject to detailed design and authority requirements. Areas are measured from centreline of party walls, outside of corridor walls, outside of external walls, and includes structure, riser shafts and vertical service ducts. Area measurement is in accordance with Property Council of Australia - Method of Measurement for Residential Property.



This floor plan, including treatment to balcony or courtyard, is indicative only and subject to change without notice. Any dimensions and areas shown may be varied subject to detailed design and authority requirements. Areas are measured from centreline of party walls, outside of corridor walls, outside of external walls, and includes structure, riser shafts and vertical service ducts. Area measurement is in accordance with Property Council of Australia - Method of Measurement for Residential Property.



RUBY

GUNG AHLIN

Apartment type	Unit Numbers
N-3A.2	Level 4 - 3
	Level 5 - 11
3 Bedrooms	Level 6 - 20
2 Bathrooms	Level 7 - 29
2 Car spaces	Level 8 - 38
	Level 9 - 47
Living area: 106m ²	Level 10 - 56
Balcony: 11m ²	Level 11 - 65
Total Area: 117m²	Level 12 - 74
	Level 13 - 83
	Level 14 - 92
	Level 15 - 101

